

Tim King

Seaford Photographic Society

PHOTOGRAPHY WORKFLOW

Topics

- Filing System
- Camera to Computer
- Tagging
- Editing
- Saving for Print Competition
- Saving for Projected Digital Image Competition

Filing System: Original Image Files

Keep It Simple:

Every month make a new folder to store original images:

C:\My Pictures\2010\09\

C:\My Pictures\2010\10\

Advantages:

- Easy to keep track of what you have or have not backed up to CD/DVD or external hard-drive ☹
- Makes a nice way to remember what you did during the year (I have stored images going all the way back to 2002)

Filing System: Competition Output

Make a folder to store your competition images:

C:\My Pictures\2010\SPS PDI\

C:\My Pictures\2010\SPS Print\

Advantages:

- Easy to keep track of what images you have entered in competitions
 - We don't allow PDI competition images in print competitions and vice-versa
 - Quick way to browse for images for "...Of The Year" competitions
 - Quick way to find images for on-line gallery at www.seafordphotosoc.co.uk
- Keeps print competition entries separate from PDI because they should be at completely different resolutions (more on this later!)

Camera To Computer

Use a Card Reader:

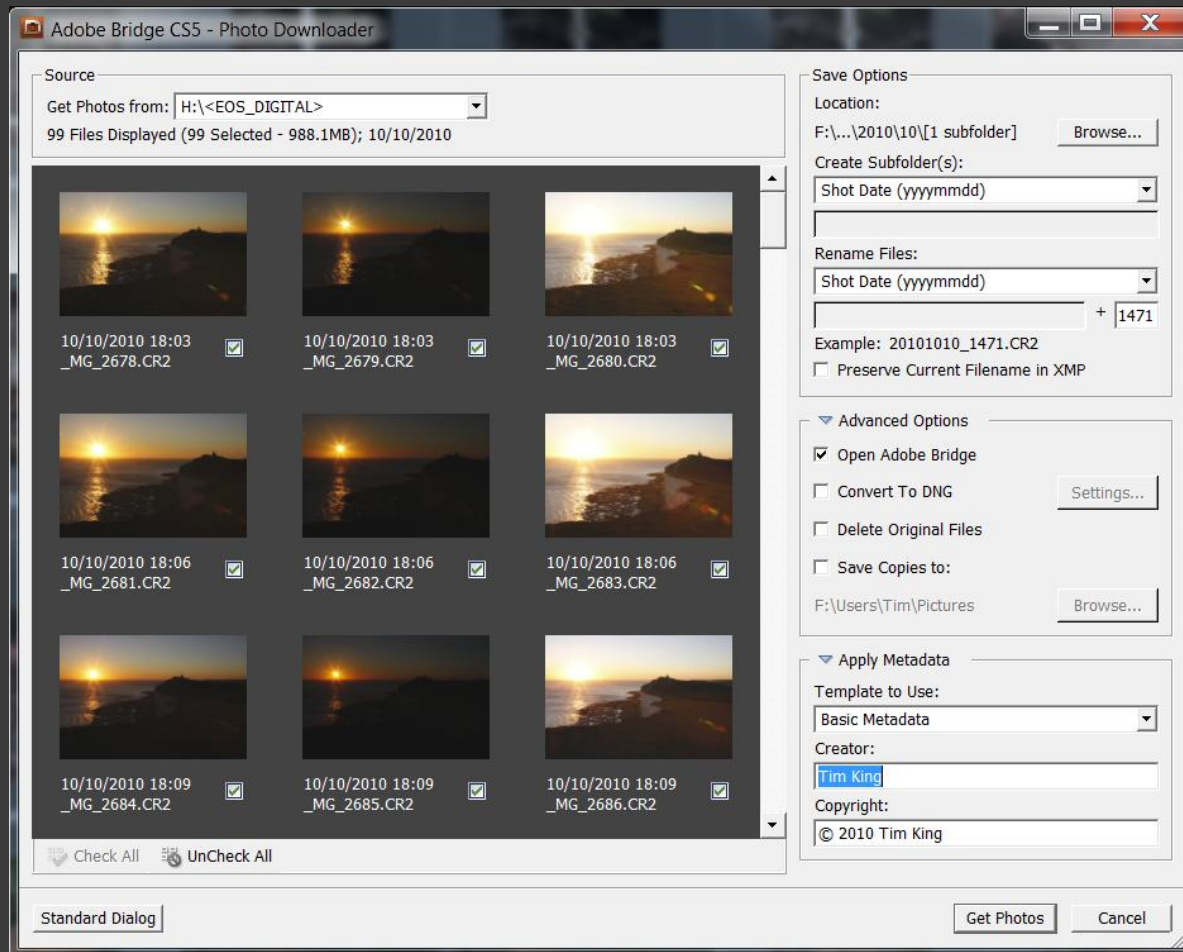
- ⦿ Can be much quicker than direct from camera
- ⦿ Saves camera battery
- ⦿ If camera battery dies during transfer, it **could** corrupt the images on the card

Camera To Computer

Use photographic software package to do transfer:

- Adobe Elements Organizer
- Adobe Bridge
- Paintshop
- etc.

Camera To Computer



Tagging

A scheme for labelling images

Advantages:

- ⦿ An image can only have one filename!
- ⦿ Unlimited (?) tags per image
- ⦿ Great way to find images quickly

Tagging

Pick a system that works for you:

Animals

Birds

Robin

Osprey

Reptiles

Iguana

Crocodile

Mammals

Cheetah

Chimpanzee

Creepy Crawlies

Spiders

Bees

Places

UK

Sussex

Birling Gap

7 Sisters

Other tagging "hierarchies" can be added, for example:

Events (festivals/gigs/parades...); People (Portraits/Candid/Friends/Family...); Landscapes; Architecture; Vehicles; Processing (Black & White, HDR...), Holidays... Etc, etc, etc

Tagging

A good tagging scheme will allow you to do image searches:

e.g. Find all your images of

- lions,
- in The Serengeti National Park,
- while on holiday
- in 2009

Editing

- “Rule of Thirds” Grid
- White Balance
- Exposure
- Spot and Noise removal
- Levels/Curves/Highlights/Shadows
- Sharpen (Unsharp Mask or High Pass Filter)
- Horizon
- Crop
- Save as PSD

Saving For Print Competition

- Flatten
- Apply a little extra sharpening
- Use Photoshop soft-proofing?
- Choose appropriate printer/paper profile
- Save as “.tif” or “.psd” in competition folder
 - For example: C:\My Pictures\2010\SPS Print\Landscape – Birling Gap.tif
- Print it!

Saving For PDI Competition

- Flatten

- Resize Image

- Projector dictates maximum width 1024 pixels
- Projector dictates maximum height 768 pixels
- Choose “Resample” image, depending on image, choose Bicubic, or Bicubic Sharper

- Apply a little extra sharpening if necessary

- Save as “.jpg” in competition folder

- For example: C:\My Pictures\2010\SPS PDI\Tim King – Chasing The Dragon.jpg
- Choose maximum quality!